



# The Tapestry Tool: A Collaborative, Interactive, and Non-Linear Online Learning Tool

Melanie Butt, Bitu Jekar, Steven J. Barnes



## Introduction

### What is The Tapestry Tool?

The Tapestry Tool is a collaborative educational tool that encourages the integration of multimedia content within a non-linear format; we call these collections of content "tapestries."

The Tool is designed by students, faculty, and staff at UBC, and has been used in postsecondary settings, research settings, and by non-profit organizations.

## Methods

### Iterative Design Process

- Input from over a thousand UBC students, staff, and faculty.
- Data collection through eye-tracking, focus groups and interviews, usability testing and surveys.

### Large Tapestries Study

#### BACKGROUND

- Users had trouble navigating "large tapestries" (i.e., > 20 nodes)
- Zoomed in: Lose connections/overview
- Zoomed out: Lose node details

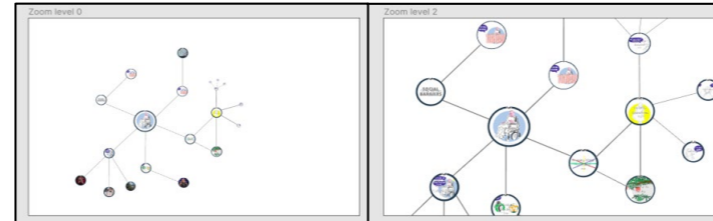
#### PROCEDURE

- Users navigated a large tapestry
- Viewed mockups and videos of proposed features; gave ratings and preferences
- User experience questionnaires



## Results

### Large Tapestries Study



A future iteration of the Tapestry Tool with dynamic zooming features



- Displays interactive and non-linear educational modules supporting diverse people and communities (e.g., LGBTQ2S+, Rural and Remote, and Deaf communities)
- For more information, see: <https://methodsclusters.ca/>; <https://www.bcahsn.ca/our-units/bc-support-unit>

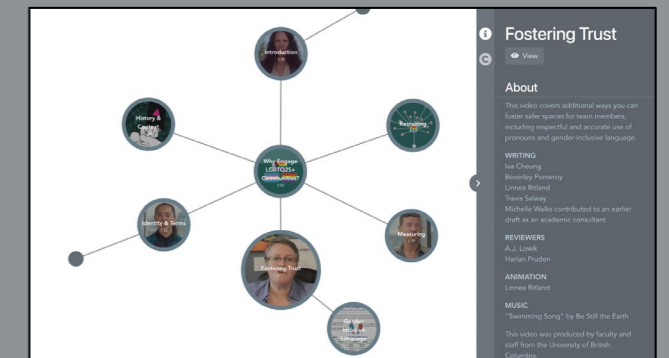


- The Tapestry Tool has been extensively adapted for use by the TYDE Project, allowing for a completely customized and highly interactive interface.
- For more information, see: <https://mytyde.ca>

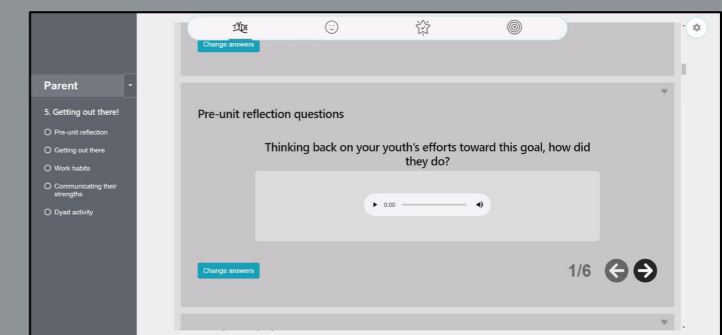
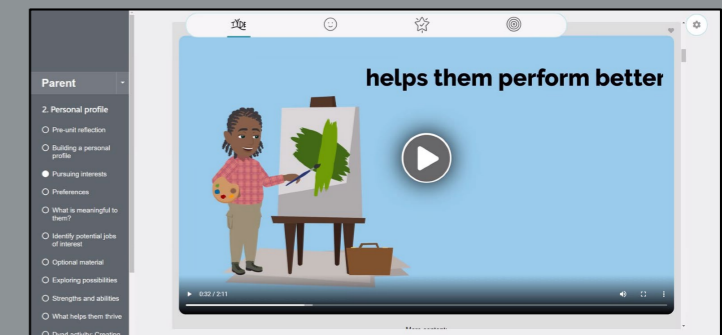
## Conclusion

- The Tapestry Tool can be adapted to suit its context.
- Facilitates knowledge exchange and helps advance community-engaged research and researcher collaboration.

## BC SUPPORT Unit



## TYDE



## Learn More

Website : <https://tapestry-tool.com/>  
Twitter : <https://twitter.com/TapestryTool>

## Acknowledgements

Trish Varao-Sousa, Linnea Ritland, Aidin Niavarani, Erin Michalak, Rachelle Hole, Leilani Forby

We gratefully acknowledge the financial support for this project provided by UBC Vancouver students via the Teaching and Learning Enhancement Fund.

